

INSTALLATION INSTRUCTIONS

Item# N1906-785/ N1906-792

READ AND SAVE THESE INSTRUCTIONS

WARNING! SHUT POWER OFF AT FUSE OR CIRCUIT BREAKER.
VERTISEMENT! COUPER LE COURANT AU NIVEAU DES FUSIBLES OU DU DISJONCTEUR.

PREPARATION (Fig.1)

1. Shut off power at the fuse box or circuit breaker box and remove the old fixture including the mounting hardware.
2. Carefully unpack your new fixture and lay out all the parts in a clean area. Ensure not to misplace any small parts necessary for installation.

MOUNTING THE FIXTURE

3. Remove mounting plate (A) from canopy (E) by removing ball nuts (D) in front of canopy (E)
4. Attach mounting plate (A) to the junction box (JB) “not provided” with junction box screws (B). The side of mounting plate (A) with “GND” marked on it and two convex points must face out.

CONNECTING THE WIRES (Fig. 2)

5. Connect the electrical wire as shown in Fig. 2, making sure that all the wire connectors are secured. If your junction box has a ground wire (green, or bare copper), connect fixture’s ground wire to it. Otherwise connect fixture’s ground wire directly to the mounting plate (A) using green screw provided.
6. Tuck wire connections neatly into junction box (JB).

FINISHING THE FIXTURE

7. To mount the fixture to the ceiling, first slip the 2x mounting screws (C) through the mounting holes (F) in the canopy (E).
8. While holding fixture in place, thread the two ball nuts (D) at the end of the mounting screws (C), and tighten.
9. Put rubber washer (RW) to all pedals (G) and Thread all the pedals (G) onto frame.
10. Install 6 x E12 base light bulbs (LB) up to 60 watts each or CFL or LED equivalent (not included) in accordance with the fixture specification.

DO NOT EXCEED THE MAXIMUM WATTAGE RATING!
(NE PAS DEPASSER LA PUISSANCE NOMINALE MAXIMALE!)

Your installation is now complete. You can now turn the power ON and test the fixture.

Note: Illustration (Fig. 1) on this manual is for installation purposes only. It may or may not be identical to the fixture purchased.

Fig.1

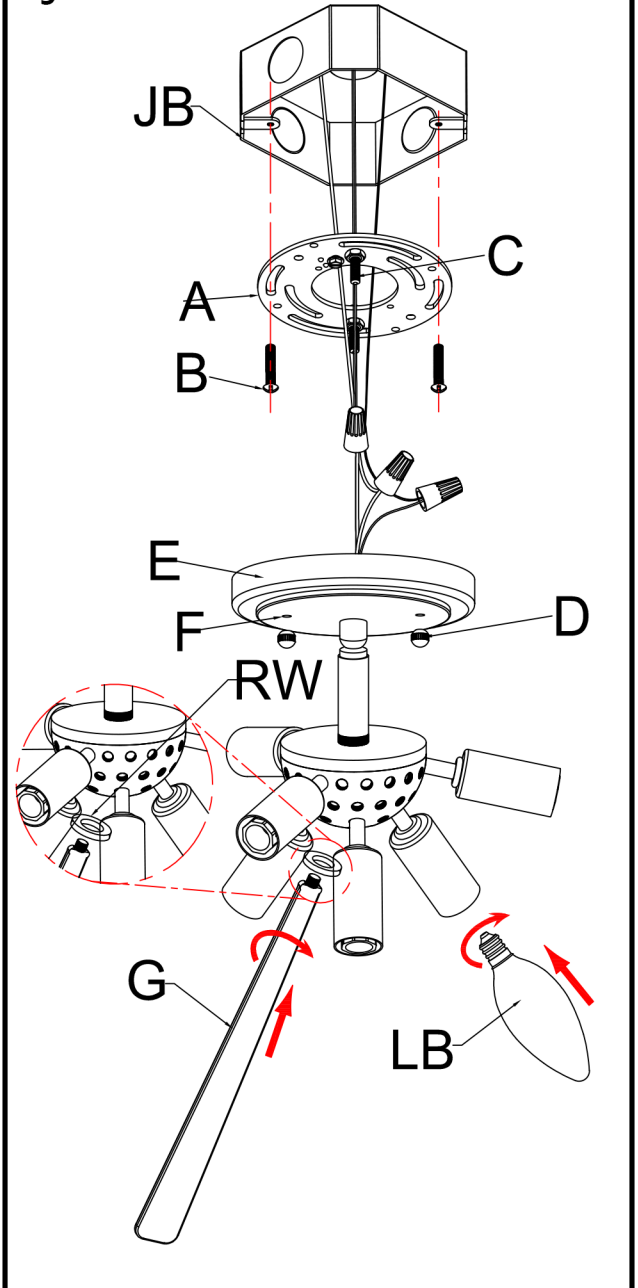
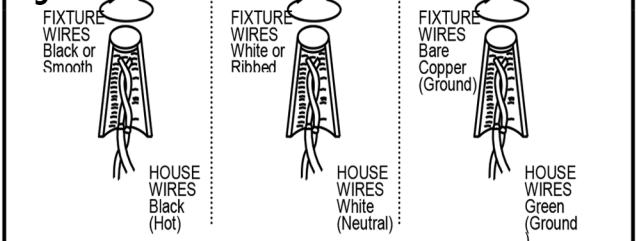


Fig. 2



american lighting association