

INSTALLATION INSTRUCTIONS

For Model 77801-66-L;77802-66-L

READ AND SAVE THESE INSTRUCTIONS

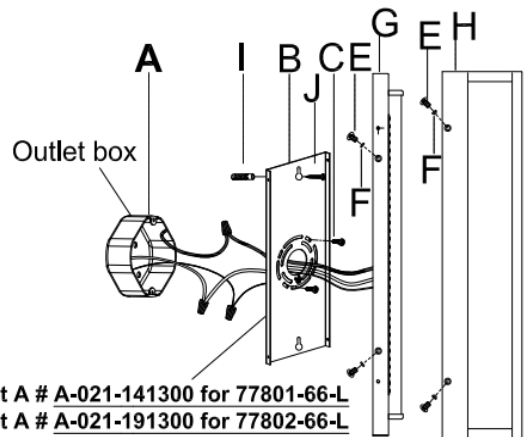
WARNING! SHUT POWER OFF AT FUSE OR CIRCUIT BREAKER.

AVERTISSEMENT! COUPER LE COURANT AU NIVEAU DES FUSIBLES OU DU DISJONCTEUR.

HANGING THE FIXTURE (Fig. 1)

1. Shut off power at the fuse box or circuit breaker box and remove the old fixture including the mounting hardware.
2. Carefully unpack your new fixture and lay out all the parts in a clear area. Take care not to misplace any small parts necessary for installation.
3. Disassemble the pre-installed frame (H) from backplate (G) by loosening mounting screw (E) and washer (F). Remove the package inside the frame (H) before installing.
4. Unscrew the mounting screws (E) & washers (F) to separate the mounting plate (B) from backplate (G).
5. Position the mounting plate (B) on wall and mark location of two holes on mounting plate where plastic anchors (I) will be inserted. Drill holes into wall and insert plastic anchors (I).
6. Attach the mounting plate (B) to the outlet box (A) (not supplied) with outlet box screws (C). (Size: #8-32*0.78"L). The side of mounting plate (B) marked "GND" must face out. Install the two wood screws (J) into the plastic anchors (I).

Fig.1

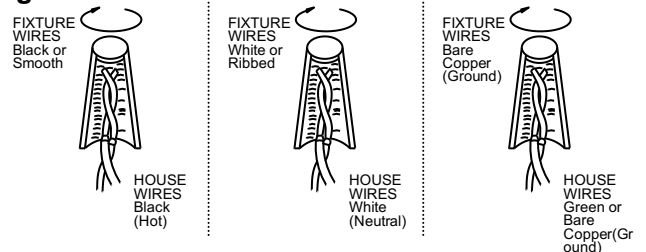


- Set A # A-021-141300 for 77801-66-L
Set A # A-021-191300 for 77802-66-L
- Mounting plate
 - Ground screw
 - Outlet box screws(2)
 - Plastic Anchor(2)
 - Wood screws(2)

CONNECTING THE WIRES (Fig. 2).

7. Connect the electrical wires as shown in Fig.2. Make sure that all wire connectors are secure. If your outlet box has a ground wire (green or bare copper), connect the fixture's ground wire to it. Otherwise, connect the fixture's ground wire directly to the mounting plate (B) using the green screw provided.

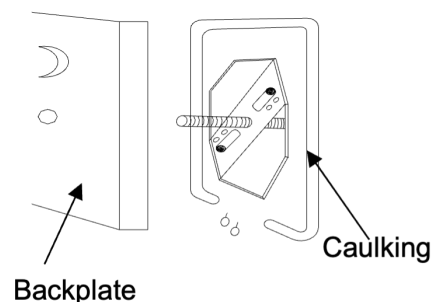
Fig. 2



COMPLETING THE INSTALLATION (Fig.1)

8. Align the backplate (G) to mounting plate (B) and secure with mounting screws (E) and washers (F).
9. Secure the frame (H) back to backplate (G) by mounting screws (E) and washers (F).
10. Bulb information: Integrated LED module
 - 1x LED 12W included for 77801-66-L
 - 1x LED 22W included for 77802-66-L
11. To prevent moisture from entering the outlet box and causing a short, use clear caulking (i.e. Indoor/Outdoor Silicone Sealant) to outline the outside of fixture back plate where it meets the wall leaving a space at bottom to allow moisture a means to escape. (Fig. 3).

Fig. 3



INSTALLATION INSTRUCTIONS

For Model 77801-66-L;77802-66-L

READ AND SAVE THESE INSTRUCTIONS

WARNING! SHUT POWER OFF AT FUSE OR CIRCUIT BREAKER.

Replacing LED module (Fig.4)

The LED module can be replaced by a qualified electrician **Without cutting of wire and without damage to any decorative element to which the fixture is attached. See installation steps for more details (Fig 4.)**

- Shut off the power.
- To remove fixture from the wall, loosen mounting screws (E) and washers (F). Remove the wire connectors. Place the fixture on a clear flat surface (Fig.1).
- Loosen screws (P) to remove small shade (O) and long shade (Q) from back plate (G).
- Loosen screws (L) to remove LED module (K) from back plate (G).
- Press the button on printed "L" quick connector on LED module (K) to disconnect black wire. Repeat by pressing the button on printed "N" quick connector on LED module (K) to disconnect white wire.
- Apply heat sink silicon on the back of new LED module.
- Reverse steps b-e for installing the new LED module.
- Silicon seal should be applied around the screw and in the cable entry

Your installation is now complete. Return power to junction box and test the fixture.

Fig.1

