

INSTALLATION INSTRUCTIONS

For MODEL# 6110-0/6110-1/6110-2/6110-3 6119-0/6119-1/6119-2/6119-3(2021.6.1)

WARNING! SHUT POWER OFF AT FUSE OR CIRCUIT BREAKER.

FOR HOUSEHOLD USE ONLY, SAVE THESE INSTRUCTIONS

WARNING: To avoid the risk of electric shock, be sure to turn off main power prior to install mirror vanity or maintenance. Please read the Installation Manual thoroughly. Clean mirror vanity periodically to help maintain its new appearance over the years. Use only a soft brush or lint free cloth to avoid scratching the finish. Never use water when cleaning, this probably cause electric shock.

INSTALL THE MIRROR VANITY AND OPERATION INSTRUCTIONS

1. Carefully unpack your new mirror vanity and lay out all the parts on a clear area. Take care not to lose any small parts necessary for installation.
2. Use Mounting Plate (E) as template and try to be near the supply wires outlet, if no junction box available then mark hole locations accordingly, drill two holes on wall. Insert anchors (B). Use 2 Tapping screws (A) to fix Mounting Plate (E) onto anchors (B) and tighten it. (Fig. 1)
3. If there is junction box then use Machine Screws (D) to fix Mounting plate (E) and Metal Plate (F) to junction box and tighten (Fig.2). Make sure side of Mounting plate (E) marked "GND" must face out.
4. Hold mirror vanity, connect the electrical wires as shown in (Fig.3), make sure that all wire connectors are secured. If your junction box does not have black, white and green wire, please consult your electrician for proper grounding. Carefully push all wires into the junction box (not included). (Fig.3) If your junction box has a ground wire (green or bare copper), connect the mirror vanity's ground wire to it. Otherwise, connect the mirror vanity's ground wire directly to the Mounting plate (E) using green screw provided.
5. Carefully install (push and slide in) the mirror vanity onto mounting plate. Secure and tighten with existing screws on top and bottom of Mounting plate (E). (Fig.2)
6. Remove protected plastic sleeve out of mirror surface. Now, the mirror installation is completed.
7. Turn on electric power from circuit breaker or switch box. Please be aware, this mirror vanity is on/off function only, No dimming function at all.

Note: Illustration (Fig.1 & 2 & 3) on this manual is for installation purposes only. It may or may not be identical to the fixture purchased







A	B	C	D	E	F
					
Tapping Screw	Anchor	Wire connector	Machine screw	Mounting Plate	Metal Plate
2PCS	2PCS	3PCS	2PCS	1PC	1PC

Fig.1

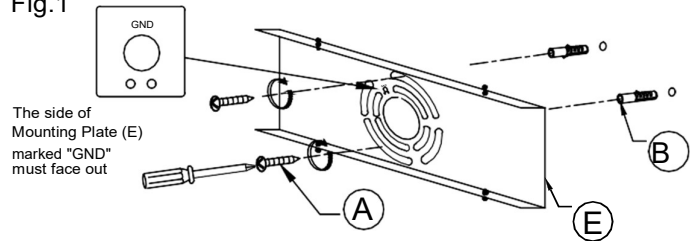


Fig. 2

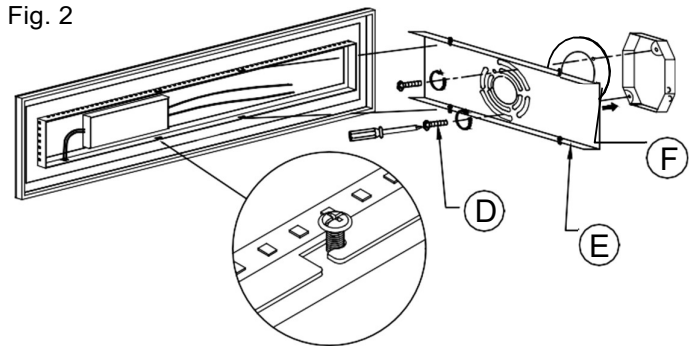
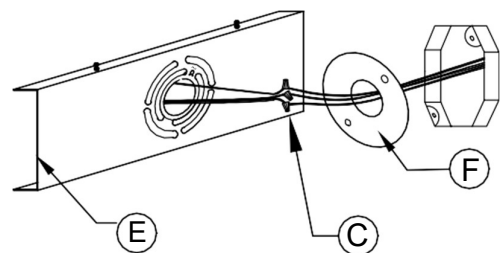


Fig. 3

Set #A-022-22076



FIXTURE WIRES Bare Copper (Ground)	FIXTURE WIRES White or Ribbed	FIXTURE WIRES Black or Smooth
HOUSE WIRES Green (Ground)	HOUSE WIRES White (Neutral)	HOUSE WIRES Black (Hot)

