

INSTALLATION INSTRUCTIONS

Item#3825-899

READ AND SAVE THESE INSTRUCTIONS

WARNING! SHUT POWER OFF AT FUSE OR CIRCUIT BREAKER.

AVERTISSEMENT! COUPER LE COURANT AU NIVEAU DES FUSIBLES OU DU DISJONCTEUR.

1. Shut off power at the fuse box or circuit breaker box and remove the old fixture including the mounting hardware.

2. Carefully unpack your new fixture and lay out all the parts in a clean area. Take care not to misplace any small parts necessary for installation.

ASSEMBLING THE FIXTURE (Fig.1)

3. The arms have been placed to lay flat for shipping. Position arms to proper position.

4. Secure rod (J) onto all thread of fixture body (K) and secure fixture loop (N) to rod (J).

5. Attach quick link (H) to fixture loop (N) and one end link of chain (I). Note: The quick link (H) must be completely closed.

6. Determine the desired hanging height and remove the excess chain (I) with proper chain pliers (Not included). Attach the other end of chain to quick link (H).

7. Carefully lace the fixture wires through the chain (I). Slide collar ring (G) over chain followed by canopy (C) and allow them to rest on fixture loop (N).

8. Install the crossbar (A) using all thread (D), lock nut (M) and collar loop (F) to the junction box (Not included) using two junction box screws (B). The side of crossbar (A) marked "GND" must face out. The length of all thread (D) maybe adjusted if necessary. Attach the other quick link (H) to collar loop (F). Note: The quick link (H) must be fully closed. Carefully feed the fixture wires through collar loop (F) and all thread (D).

CONNECTING THE WIRES (Fig. 2)

9. Connect electrical wires as shown in Fig.2, making sure that all wire connectors are secured. If your junction box has a ground wire (green or bare copper), connect fixture's ground wire to it. Otherwise, connect ground wire directly to crossbar (A) using green screw (E) provided.

10. Tuck wire connectors neatly into the junction box.

COMPLETING THE INSTALLATION (Fig. 1)

11. Place canopy (C) up against ceiling and thread collar ring (G) onto collar loop (F).

12. Install (2) two candelabra base bulbs (L) up to 60 watts each or CFL or LED equivalent (not included) in accordance with the fixture specification.

—DO NOT EXCEED THE MAXIMUM WATTAGE RATING! (NE PAS DEPASSER LA PUISSANCE NOMINALE MAXIMALE!)

Your installation is now complete. Return power to the junction box and test the fixture.

Note: Illustration (Fig. 1) on this manual is for installation purposes only. It may or may not be identical to the fixture purchased.

IMPORTANT: FIXTURE SHOULD BE INSTALLED BY A QUALIFIED ELECTRICIAN TO ENSURE PROPER WIRING AND INSTALLATION.

Fig.1

Set#A-016

-Crossbar

-Ground Screw

-Junction Box Screw *2

Candle Cover# CCV21080P-899

Chain# HCH2072-899

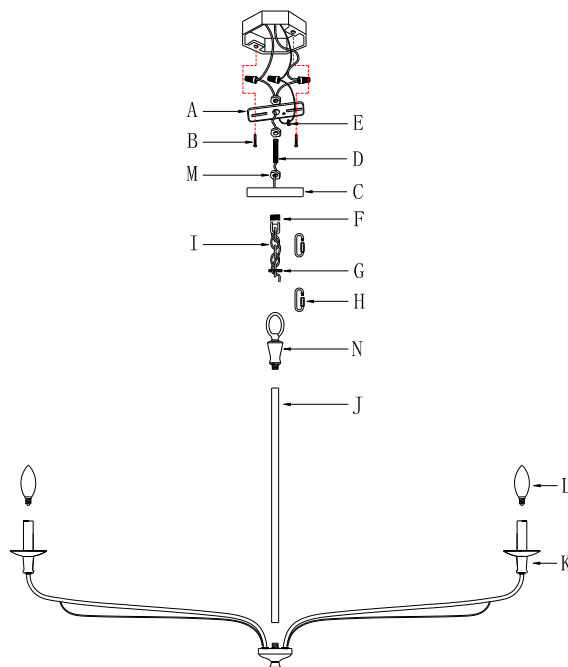
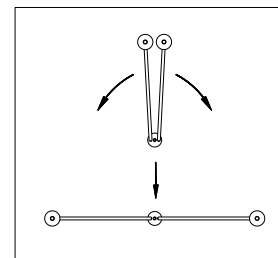


Fig. 2

FIXTURE WIRES
Black or
Smooth



HOUSE WIRES
Black
(Hot)

FIXTURE WIRES
White or
Ribbed



HOUSE WIRES
White
(Neutral)

FIXTURE WIRES
Bare
Copper
(Ground)

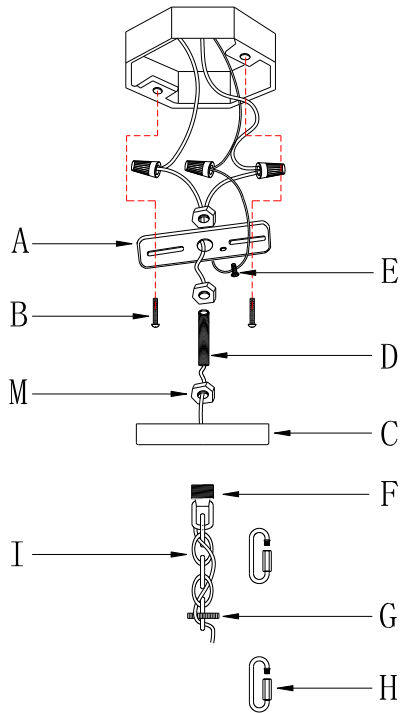


HOUSE WIRES
Green
(Ground)



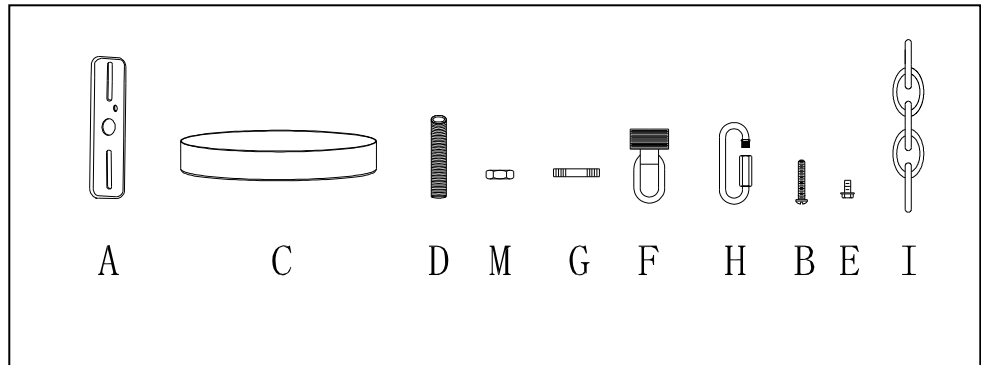
Notice: It is important to use proper chain pliers (not included) To OPEN and CLOSE the chain included with this fixture. Do not open them with other tools that may twist or stress the chain links. It is important to use proper chain pliers like the ones shown in the diagram.

Fig.3



a. Hardware Bag:

- A. Crossbar *1
- B. Junction Box Screw *2
- C. Canopy *1
- D. All Thread *1
- E. Ground Screw *1
- F. Collar Loop *1
- G. Collar Ring *1
- H. Quick Link *2
- I. Chain *1
- M. Lock Nut *3



b. Hardware Bag:

- J. Rod
- N. Fixture loop

