

INSTALLATION INSTRUCTIONS

Item#3797-732 3797-84 3797-899

READ AND SAVE THESE INSTRUCTIONS

WARNING! SHUT POWER OFF AT FUSE OR CIRCUIT BREAKER.
AVERTISSEMENT! COUPER LE COURANT AU NIVEAU DES FUSIBLES OU DU DISJONCTEUR.

1. Shut off power at the fuse box or circuit breaker box and remove the old fixture including the mounting hardware.
2. Carefully unpack your new fixture and lay out all the parts in a clean area. Take care not to misplace any small parts necessary for installation.

ASSEMBLING THE FIXTURE (Fig.1)

3. Secure all thread (K) onto coupler on fixture body (M). Slide column (O) over all thread (K) on fixture body (M) and secure with decorative nut (L).
4. Determine the desired hanging height and thread rods (I/J) to all thread on fixture body (M). Carefully feed wires through each rod as you assemble.
5. Secure fixture loop (G) onto rod (I), attach quick link (H) to fixture loop (G).
6. Install crossbar (A) using all thread (D), lock nut (R) and collar loop (F) to junction box (Not included) using two junction box screws (B). The side of crossbar (A) marked "GND" must face out. The length of all thread (D) adjusted if necessary. Slide collar ring (Q) over quick link (H) followed by canopy (C). Secure quick link (H) to collar loop (F). Note: The quick link (H) must be fully closed. Insert fixture wires through all thread (D).

CONNECTING THE WIRES (Fig. 2)

7. Connect electrical wires as shown in Fig.2, making sure that all wire connectors are secured. If your junction box has a ground wire (green or bare copper), connect fixture's ground wire to it. Otherwise, connect ground wire directly to crossbar (A) using green screw (E) provided.
8. Tuck wire connectors neatly into the junction box.

COMPLETING THE INSTALLATION (Fig. 1)

9. Place canopy (C) up against ceiling and thread collar ring (Q) onto collar loop (F).
10. Install (4) four candelabra base bulbs (P) up to 60 watts each or CFL or LED equivalent (Not included) in accordance with the fixture specification.
— DO NOT EXCEED THE MAXIMUM WATTAGE RATING! (NE PAS DEPASSER LA PUISSANCE NOMINALE MAXIMALE!).
11. Thread glass shade (N) over socket on fixture (M). Do not over tighten.

Your installation is now complete. Return power to the junction box and test the fixture.

Note: Illustration (Fig. 1) on this manual is for installation purposes only. It may or may not be identical to the fixture purchased.

IMPORTANT: FIXTURE SHOULD BE INSTALLED BY A QUALIFIED ELECTRICIAN TO ENSURE PROPER WIRING AND INSTALLATION.

Fig.1

- Set#A-016
 -Crossbar
 -Ground Screw
 -Junction Box Screw *2
 Rod# W32-H-732 (I-6") W32-1-732 X 3 (J-12")
 Rod# W32-H-84 (I-6") W32-1-84 X 3 (J-12")
 Rod# W32-H-899 (I-6") W32-1-899 X 3 (J-12")

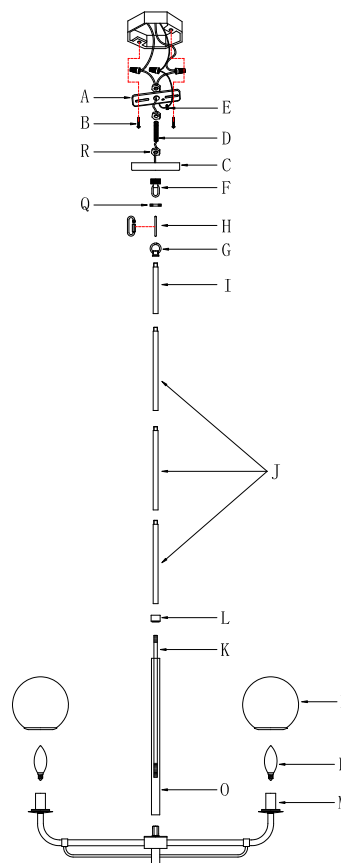


Fig. 2

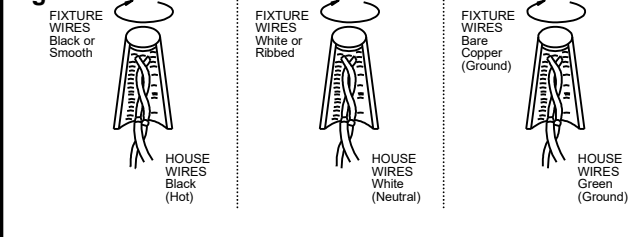
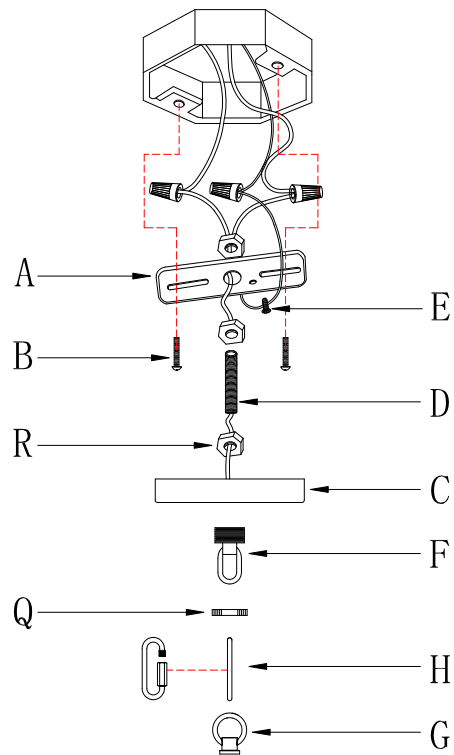
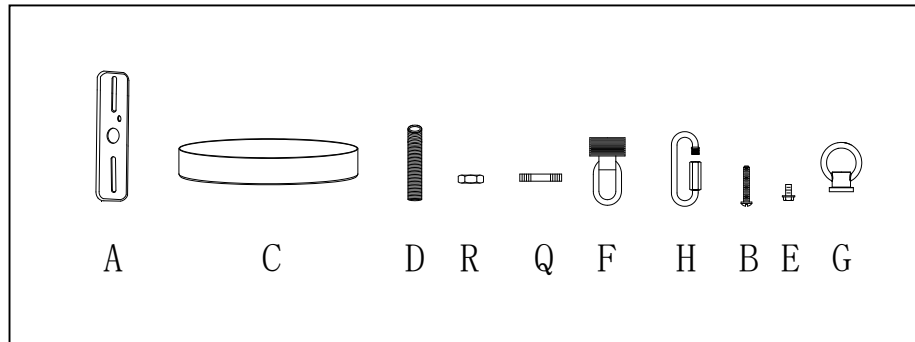


Fig.3



a. Hardware Bag:

- A. Cross Bar *1
- B. Junction Box Screw *2
- C. Canopy *1
- D. All Thread *1
- E. Ground Screw *1
- F. Collar Loop *1
- G. Fixture Loop*1
- H. Quick Link *1
- Q. Collar Ring *1
- R. Lock Nut *3



b. Hardware Bag:

- J. ROD 12" *3
- I. ROD 6" *1

