

INSTALLATION INSTRUCTIONS

Item#2602-732

READ AND SAVE THESE INSTRUCTIONS

WARNING! SHUT POWER OFF AT FUSE OR CIRCUIT BREAKER.

AVERTISSEMENT! COUPER LE COURANT AU NIVEAU DES FUSIBLES OU DU DISJONCTEUR.

PREPARATION (Fig.1)

1. Shut off power at the fuse box or circuit breaker box and remove the old fixture including the mounting hardware.
2. Carefully unpack your new fixture and lay out all the parts in a clean area. Take care not to misplace any small parts necessary for installation.
3. Position mounting plate (J) on wall and mark location of two holes on mounting plate (J) where plastic anchors (H) will be inserted. Drill holes into wall and insert plastic anchor (H).
4. Attach mounting plate (J) to the junction box (not included) with junction box screw (L) (Size:#8-32N*L1/2"). The side of mounting plate marked "GND" must face out. And install the two wood screws (M) into the plastic anchors(H).
5. Loosen screws (D), remove nuts(A) and washer (B) from backplate (I), and then take off top arm (C) from backplate (I). Please take attention, don't throw away the parts that have been removed.
6. Place the alabaster shade (N) onto the bottom arm (P), and secure with set screw (F) using Allen wrench (G) provided. Place the top arm (C) on top of alabaster shade (N), adjust the position to the center, then secure it with set screw (F). Align the two screw holes on the top arm (C) with the holes on the backplate (I) and secure them with nuts (A) and washer (B).

CONNECTING THE WIRES (Fig. 2)

7. Connect the electrical wires as shown in Fig 2, making sure that all wire connectors are secured. If your junction box has a ground wire (green or bare copper), connect fixture's ground wire to it. Otherwise, connect fixture's ground wire directly to the mounting plate (J) using green screw provided.
8. Tuck wire connectors neatly into the junction box.

COMPLETING THE INSTALLATION (Fig. 1)

9. Place backplate (I) over mounting plate (J), secure with cap nuts (O).
10. Install (2) two candelabra base bulbs up to 60 watts each or CFL or LED equivalent (not included) in accordance with the fixture specification.—**DO NOT EXCEED THE MAXIMUM WATTAGE RATING! (NE PAS DEPASSER LA PUISSANCE NOMINALE MAXIMALE!)**

Your installation is now complete. Return power to the junction box and test the fixture.

Note: Illustration (Fig. 1) on this manual is for installation purposes only. It may or may not be identical to the fixture purchased.

Fig.1

Set#A-021-240

-Mounting plate

-Ground screw

-Wood screws (2)

-Plastic Anchors (2)

-Junction box screws (2)

Allen Wrench#WRH-L-M4

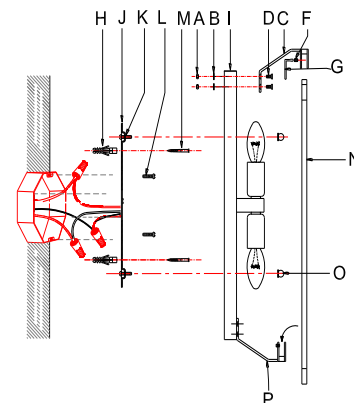
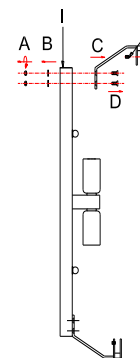


Fig. 2

FIXTURE WIRES
Black or
Smooth



HOUSE WIRES
Black
(Hot)

FIXTURE WIRES
White or
Ribbed



HOUSE WIRES
White
(Neutral)

FIXTURE WIRES
Bare
Copper
(Ground)



HOUSE WIRES
Green
(Ground)

Min 75°C SUPPLY CONDUCTORS