

INSTALLATION INSTRUCTIONS

Item# 142-732

READ AND SAVE THESE INSTRUCTIONS

WARNING! SHUT POWER OFF AT FUSE OR CIRCUIT BREAKER.
AVERTISSEMENT! COUPER LE COURANT AU NIVEAU DES FUSIBLES OU DU DISJONCTEUR.

1. Shut off power at the fuse box or circuit breaker box and remove the old fixture including the mounting hardware.
2. Carefully unpack your new fixture and lay out all the parts in a clean area. Take care not to misplace any small parts necessary for installation.

ASSEMBLING THE FIXTURE (Fig.1)

3. Push the wires of fixture body (L) up through the rattan shade (K). Determine desired hanging height and thread rods (J/I) on fixture body (K). Then attach fixture loop (G) by threading into rod (I/J). Carefully feed wires through each rod as you assemble.
4. Push fixture wires carefully through swivel (F), collar ring (G), canopy (C) and all thread (D) of crossbar assembly. Thread swivel (F) to rod (J/I).
5. Slip collar ring (G) and canopy (C) over swivel (F) and allow them to rest on rod (J/I). Thread swivel (F) to all thread (D) of crossbar assembly.
6. Attach crossbar assembly to junction box (Not included) using junction box screw (B). The side of crossbar (A) marked "GND" must face out. The length thread (D) into crossbar (A) maybe adjusted if necessary. Then tighten with lock nuts (O) provided. Push fixture wires through all thread (D) inside junction box.

CONNECTING THE WIRES (Fig. 2)

7. Connect electrical wires as shown in Fig.2, making sure that all wire connectors are secured. If your junction box has a ground wire (green or bare copper), connect fixture's ground wire to it. Otherwise, connect ground wire directly to crossbar (A) using green screw provided.
8. Tuck wire connectors neatly into the junction box.

COMPLETING THE INSTALLATION (Fig. 1)

9. Position canopy (C) up against ceiling and thread collar ring (G) to secure fixture to ceiling.
10. Install (3) three medium base bulbs (P) up to 60 watts each or CFL or LED equivalent (Not included) in accordance with the fixture specification.
— **DO NOT EXCEED THE MAXIMUM WATTAGE RATING! (NE PAS DEPASSER LA PUISSANCE NOMINALE MAXIMALE!).**
11. Thread coupling rod (M) to the bottom of fixture body (L), then thread metal shade (N) to coupling rod (M).

Your installation is now complete. Return power to the junction box and test the fixture.

Note: Illustration (Fig. 1) on this manual is for installation purposes only. It may or may not be identical to the fixture purchased.

IMPORTANT: FIXTURE SHOULD BE INSTALLED BY A QUALIFIED ELECTRICIAN TO ENSURE PROPER WIRING AND INSTALLATION.

Fig.1

Set#A-016

-Crossbar

-Ground Screw

-Junction Box Screw *2

Rod#

W32-H-732 (I-6")

W32-1-732 X 3 (J-12")

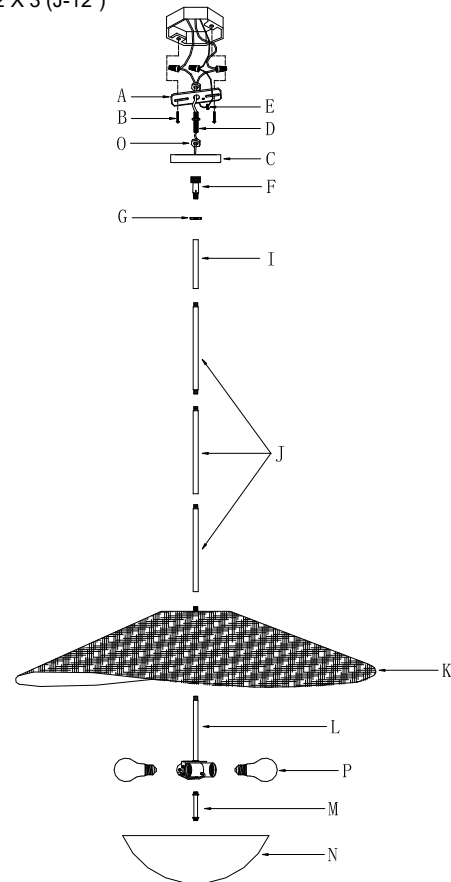


Fig. 2

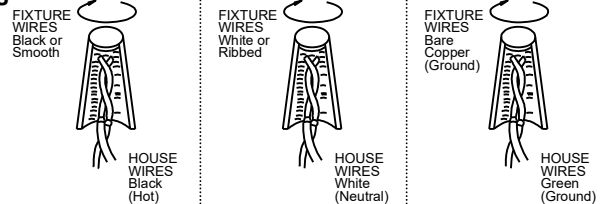
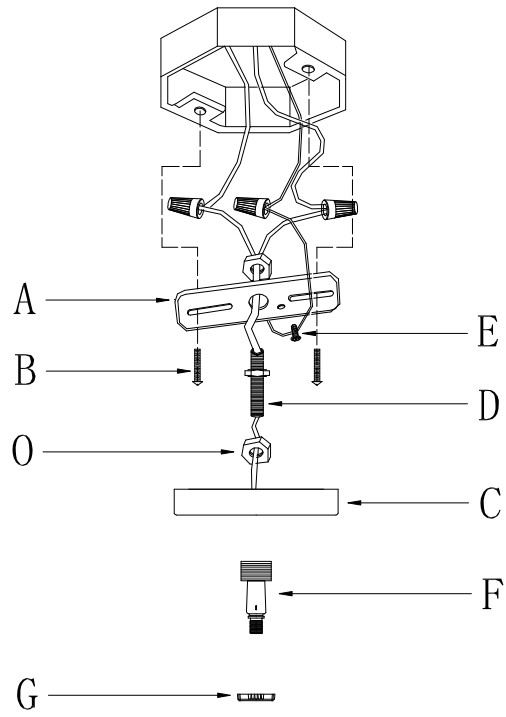
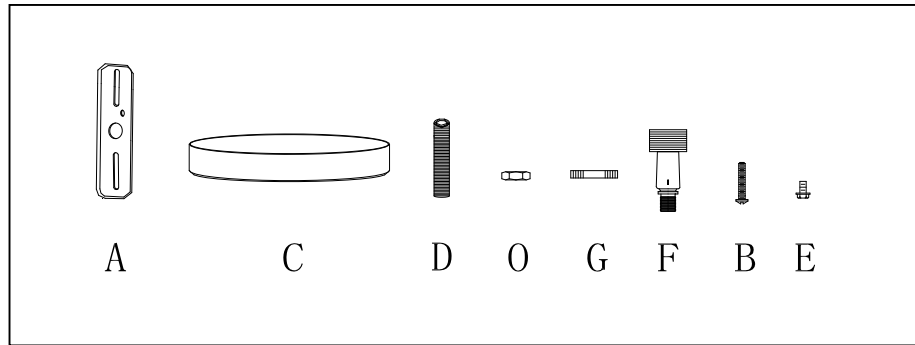


Fig.3



a. Hardware Bag:

- A. Crossbar *1
- B. Junction Box Screw *2
- C. Canopy *1
- D. All Thread *1
- E. Ground Screw *1
- F. Swivel *1
- G. Collar Ring *1
- O. Lock Nut *3



b. Hardware Bag:

- J. ROD 12" *3
- I. ROD 6" *1
- M. Coupling Rod *1

